

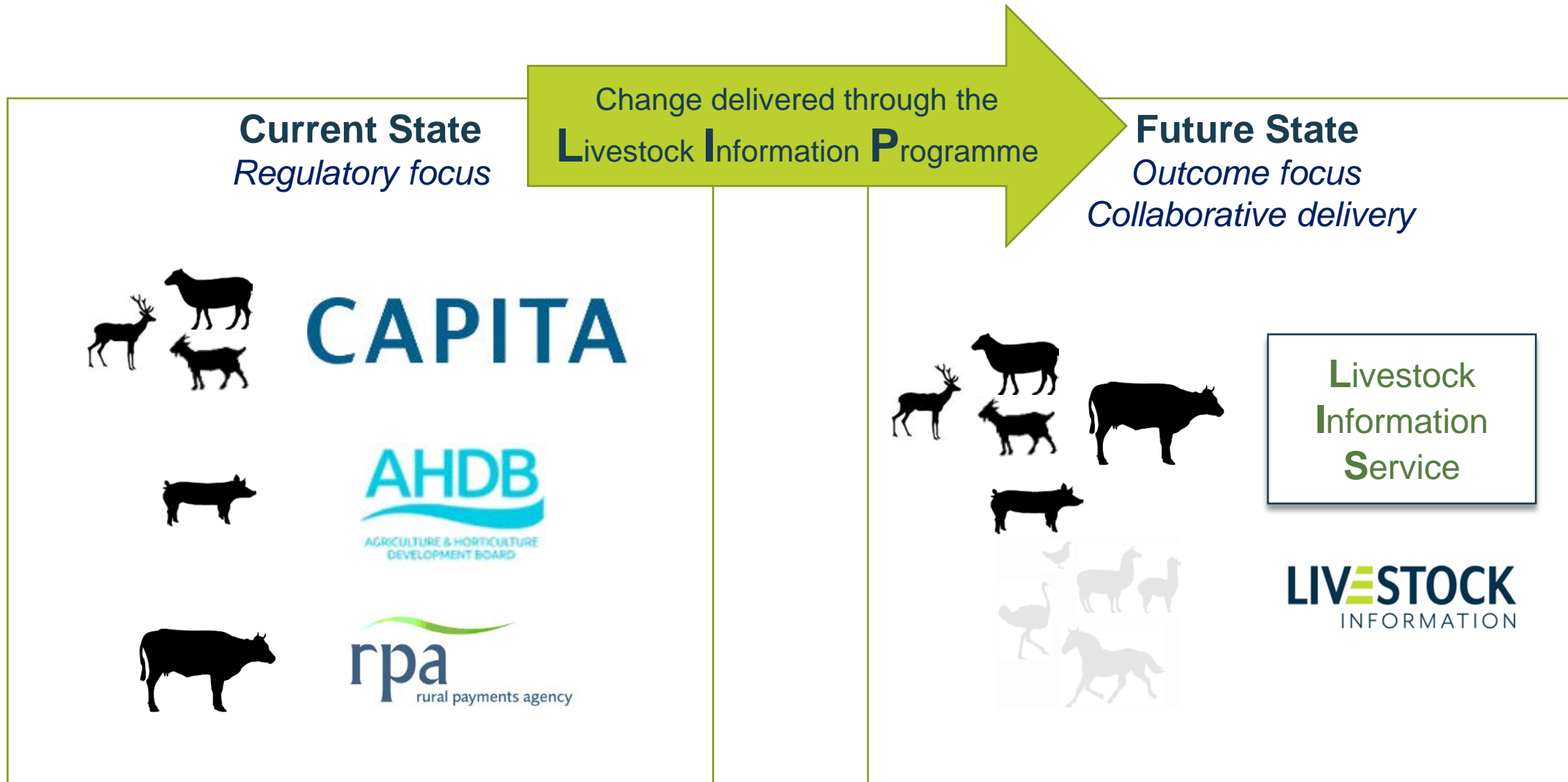
Livestock Information Service

AIMS & BMPA Members Webinar - LIS Multi-species platform

3rd generation traceability for sheep, deer and goats in England

21st February 2022

Livestock Information Programme is about a series of evolutions...



Delivery Status

Release 1.0

- On track for go-live in March
 - Starting with new animal ID system 7th March
 - Then implementation of sheep LIS (to replace ARAMS) – Users will be transitioned from ARAMS to LIS over a 10-day period, cutover starting from 23rd March when Markets will send their final reports to ARAMS and gradually open up from 28th March.

Initial implementation will bring improvements, but this is not 'once and done' change.

Change is more than the system. This is about changing the conversation to using actionable insights with TDUG and businesses to drive better industry performance.

Sheep Traceability – Overall regime unchanged for now



Batch and/or individual



Individual EID



Batch and/or individual



Individual EID



ARAMS data – 2021 snapshot

69k active holdings.

600k moves.

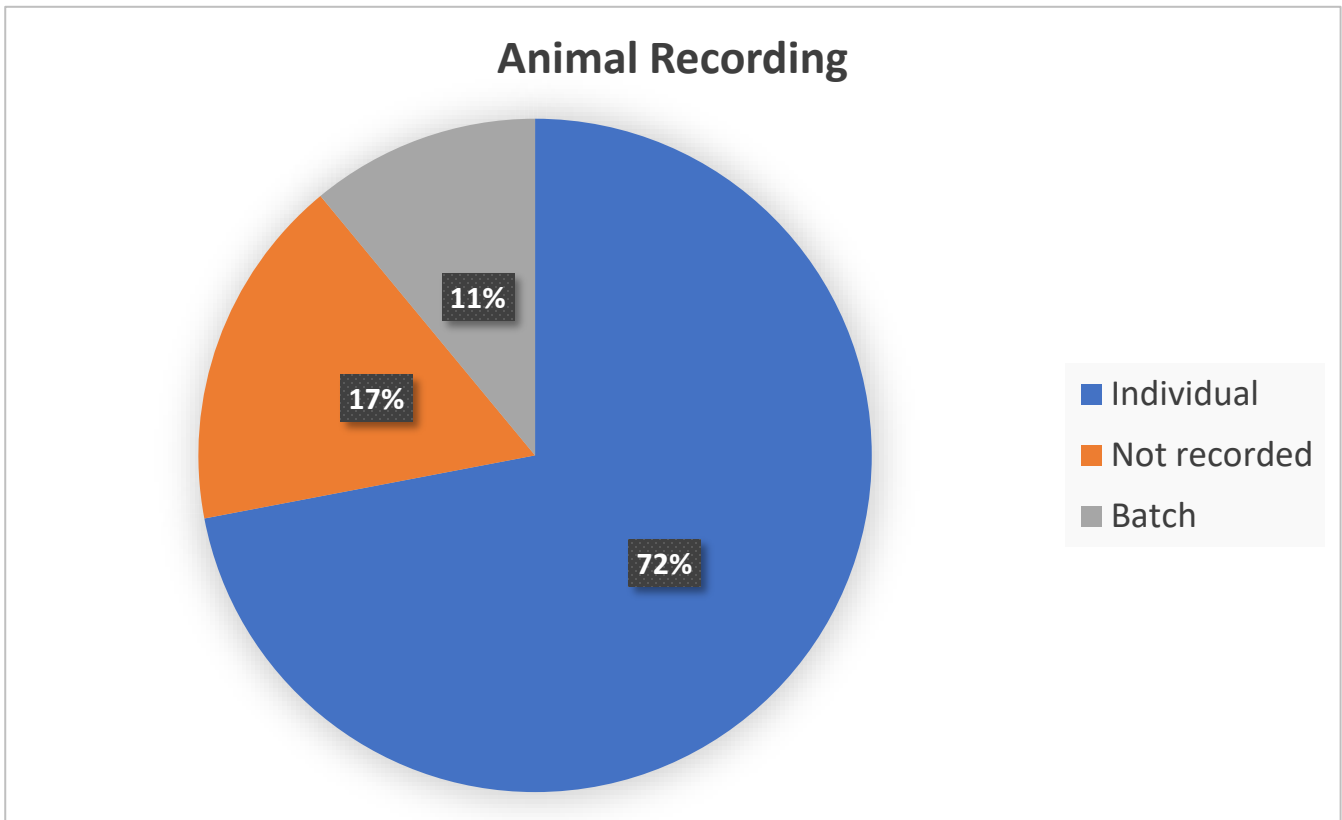
23m animals moved last year.

85% success



Non-digital. 9.68 days

Digital. 1.73 days



Sheep movements and tracings

1 day

2. Previous Contact of Animals at Selected Premises:

Based on the premises presented in (2). The Number of animals in contacts at premises and previous premises are presented below. Use the date filters to limit contact data ..

Date at Affected Premises

21/01/2022 21/01/2022

420

Unique Premises

40205

Contact at Premises

● OFF ● ON



3 days

2. Previous Contact of Animals at Selected Premises:

Based on the premises presented in (2). The Number of animals in contacts at premises and previous premises are presented below. Use the date filters to limit contact data ..

Date at Affected Premises

19/01/2022 21/01/2022

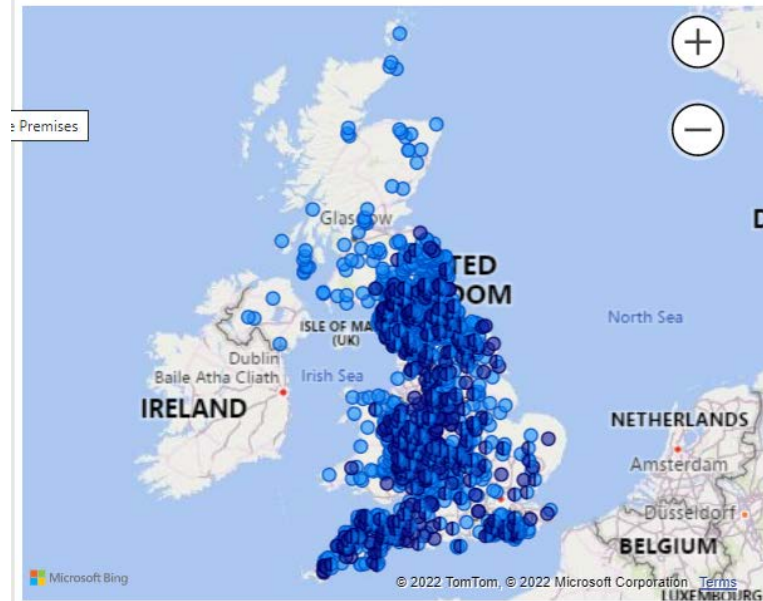
1656

Unique Premises

196998

Contact at Premises

● OFF ● ON



21 days

2. Previous Contact of Animals at Selected Premises:

Based on the premises presented in (2). The Number of animals in contacts at premises and previous premises are presented below. Use the date filters to limit contact data ..

Date at Affected Premises

01/01/2022 21/01/2022

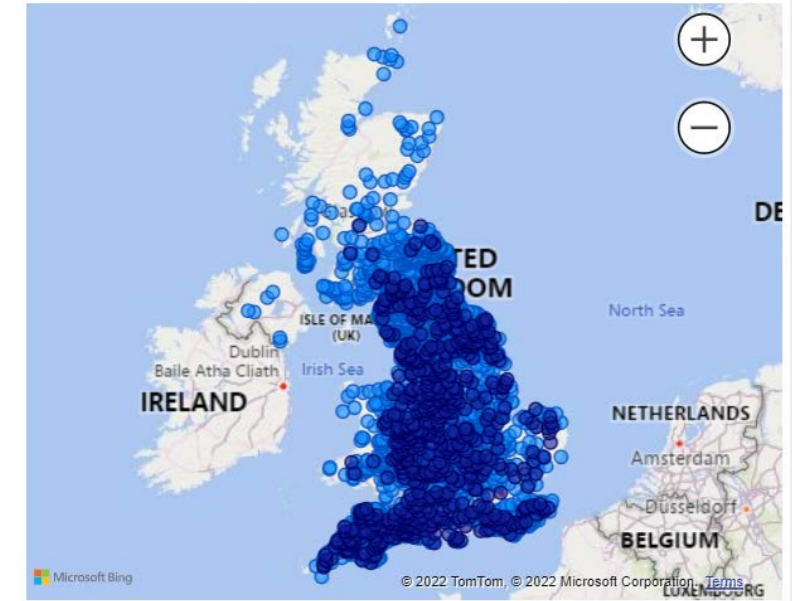
6330

Unique Premises

1175378

Contact at Premises

● OFF ● ON



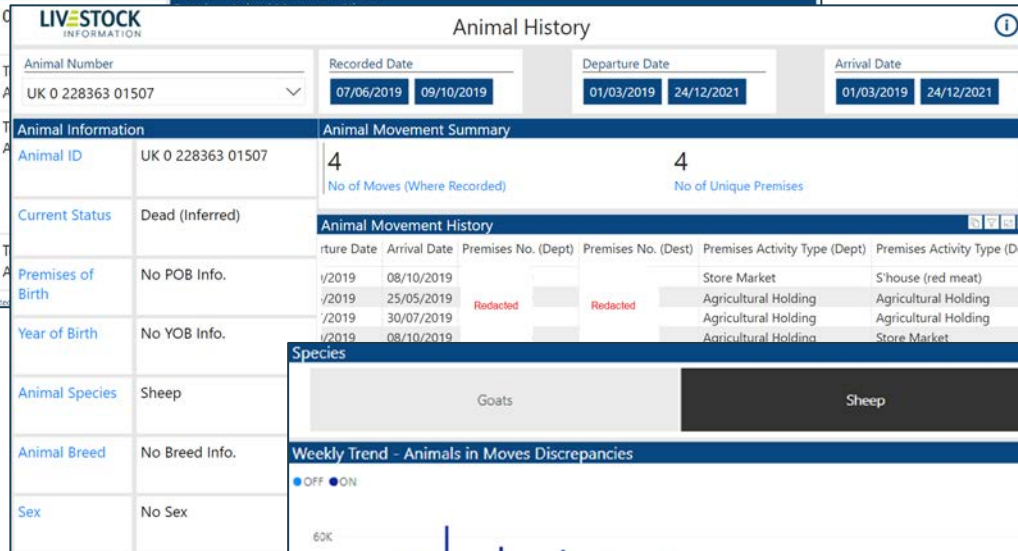
Enhanced Reporting



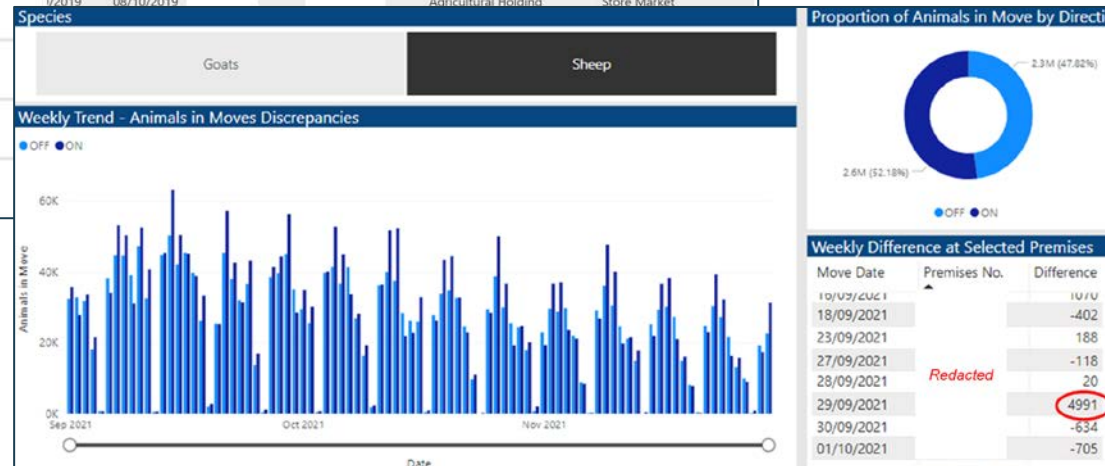
Users – who uses what channel, makes what notifications from which holding.



Holding – animals on and off a holding.



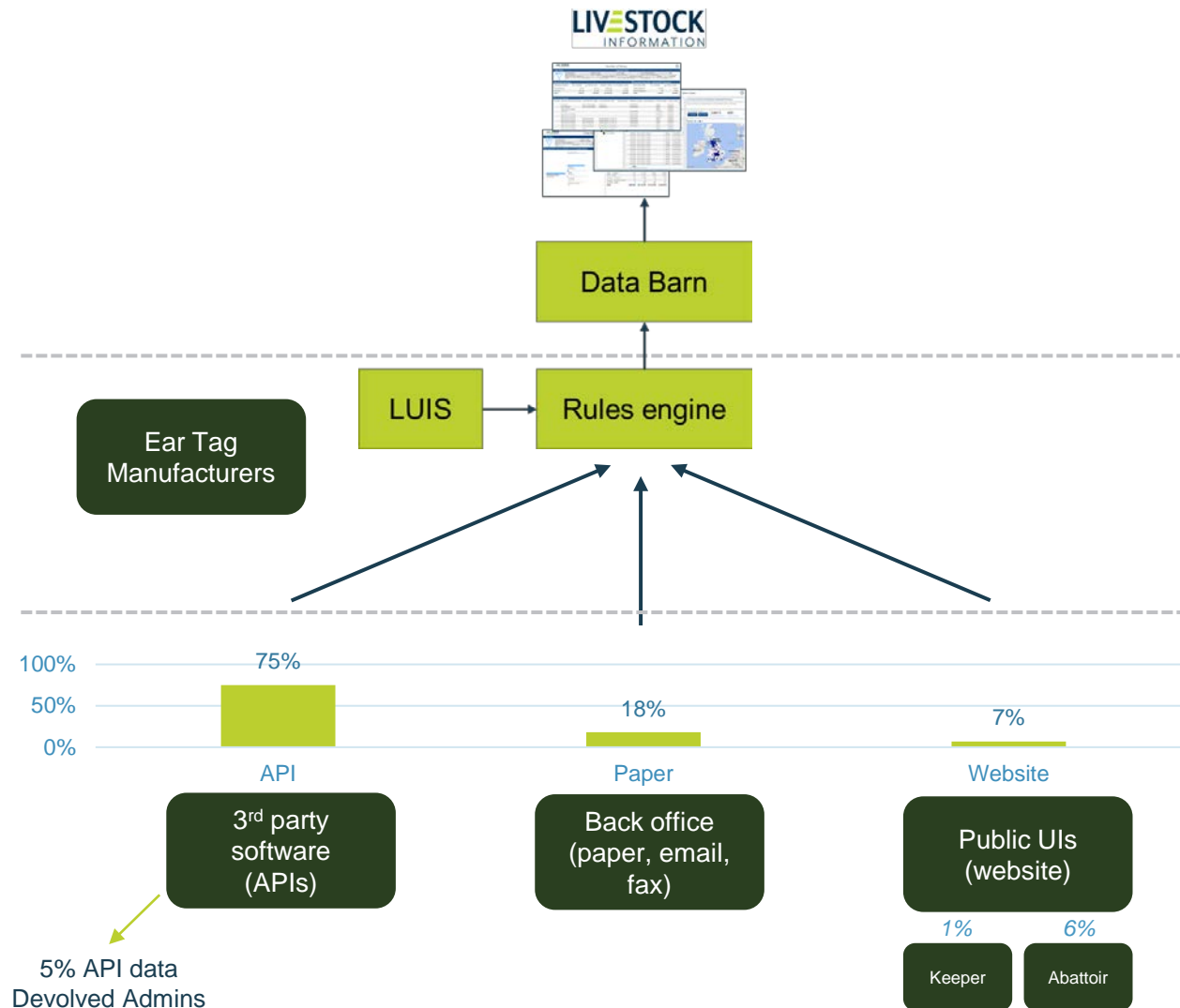
Animal – where, who, when



Data performance

Future use of analytics

User Channels and Volumes



- Changes for ETMs being managed through ALIDMA. Largely invisible for most of industry.
- Changes for markets being managed through 3rd party software providers. Minimal changes.
- Changes for abattoirs being managed either through 3rd party provider, or directly with LI if using the website (user interface).
- All abattoir users will need to confirm registration details **and** sign-up to the new service.
- Changes for farmers mostly invisible (for paper users). All farmers will need to confirm registration details and sign-up to the new service.

What Is and Isn't Changing

LIS (transition beginning 25th March 2022)

Business / Service

- This first release has been deliberately designed to make only essential changes, particularly for industry
- Abattoirs will continue to report movements as they do today – using software or a website
- 3rd party software providers have upgraded their products to more modern protocols; The same work will be reused for future species (cattle, pigs)
- All users need to sign-up to use the service; Abattoirs will be asked to confirm registration details to minimise disruption on the first day they login to LIS and ensure readiness ahead of switch-over
- A new LI email address has been created, letters, forms & movement documents will, over time, be rebranded as LI

Technical

- LIS replaces ARAMS for sheep, goat and deer movements and LI data barn replaces ARAMS reports
- All historic ARAMS data has been migrated to the LI data barn and reporting platform; the LI movement platform will start with no data in it – it will gradually build up a definitive position over time. The data barn will join up historic and new data to create a single picture
- LIS sends cross border movements to Devolved Admins and they will send theirs to LIS, just as they do now

What Our Industry Users Will See

Markets	Abattoirs	Farmers
<p>Level of change – Minimal</p> <ul style="list-style-type: none"> • Around 70% of moves are reported by markets, all digitally using 3rd party software • Market users will need to register with LIS so that they can submit or amend movements; this will be completed before go live and will not be onerous • Markets are served by two 3rd party software providers, Newline and TGL. Each has worked closely with LI to integrate their technology with ours. Testing has been successfully completed. <ul style="list-style-type: none"> • Each software provider will work with their customers to ensure changes are understood – though their software will mostly look the same 	<p>Level of change – Moderate</p> <ul style="list-style-type: none"> • Around 7% of moves are from abattoirs. They are required to report digitally and use a mixture of the website and 3rd party software • Those using the ARAMS website will register with LIS and then use the new LIS website; little change to functionality although we have made some improvements that we hope will be well received in process terms <ul style="list-style-type: none"> • Surveys are being sent to ARAMS website users, to confirm registration details • Abattoirs using 3rd party software will see little change, other than needing to register with LIS first • Some abattoirs will move from using 3rd party software to using the LIS website to report movements 	<p>Level of change – Minimal</p> <ul style="list-style-type: none"> • Around 20% of moves are submitted by farmers on paper (movement forms are sent to a PO Box and then scanned and entered into the system by the back office). Nothing will change for these users, until a programme to increase digital adoption begins • Around 1% of moves come from farmers using the ARAMS website. These farmers will need to register on the LIS website. The LIS website is different and user testing to date has been complimentary regarding the improvements made; • A vigorous communication plan is underway for current website users <ul style="list-style-type: none"> • Each 3rd party software provider will work with their customers to ensure changes are understood, they know what they will need to do

* The remaining 3% of moves are cross-border moves to/from DAs

What other changes will Abattoirs see?

- The key change for all abattoirs is you **must** sign-up to use LIS.
- Your email address acts as your username. You'll also need to set a password, and remember them both in order to login to LIS.
 - If you save your login & password to your browser, login details will auto appear, one click to accept
- Collection Centre website users can no longer move ON and OFF moves in bulk. OFF moves will need to be reported separately, uploading the relevant tags

What happens – transition week before and after?

1. The week before switch-over abattoirs will be asked to send final notifications to ARAMS **on Friday 25th March (midnight)**;
 - All animals received into the abattoir must be reported on Friday 25th March, so the movement is completed on ARAMS
 - Reminder emails will be sent to you from TDUG members Norman Bagley & Nick Allen and your 3rd party software provider
 - Abattoirs will no longer be able to login and report to ARAMS
2. You **MUST** hold back all movement notifications **from midnight Friday 25th March and Wednesday 30th March**
3. On **Wednesday 30th March** abattoirs can start reporting to LIS.
 - LIS website is active, registered abattoirs can login to the LIS website as they do today and all movement notifications will be sent to LIS
 - The first time you log in (on any device), you will be prompted to enter the same email address and password used for LIS sign-up
 - 3rd party software is activated, registered abattoirs can login to their 3rd party software as they do today and all movement notifications will be sent to LIS

How do Abattoirs sign-up for LIS?

1. If using software, provide your 3rd Party with an email address
2. If using LI website, complete LI survey being sent to you, to confirm registration details
3. When LIS registration opens (**14th March**), you will be sent a link to sign-up to the service;
 - Click on the link and select sign-in button
 - Enter your CPH
 - The email address as confirmed as part of registration confirmation (step 1&2) should appear automatically
 - Confirm the email and a code will then be sent to the confirmed email address
 - Enter the code, and you will be asked to enter a password and confirm it
 - Sign-up is complete
4. Completing the survey before go-live will minimize potential disruption on your first report to the new service
5. We will monitor uptake and provide support via the LIS Service desk



[Home](#)

Verify CPH number

In order to create an account, you will need your CPH number.

If you don't have this, please read about [obtaining a CPH number](#).

Please enter your CPH - (**/**/****)

[Verify CPH Number](#) [Cancel](#)

By creating an account you agree to our [privacy policy](#).



[Home](#)

Verify email & create password.

Your account is nearly setup, we now need to verify your email address. A verification code will be sent to your inbox using the email address you've confirmed. You will need to create a password for your account, in order to continue.

Email verification is necessary. Please click the send verification button.

Email

Verification code

[Send verification code](#)

Create password

Confirm password

[Create account](#) [Cancel](#)

Communications plan to Abattoirs

- Letters from ARAMS to website users this week (i.e. users who report electronically, but not via 3rd party software providers)
 - Survey to ARAMS website users to confirm registration details will follow
- Over the next 2 weeks, communication pack will be shared with abattoirs via Norman Bagley and Nick Allen (TDUG members) or your 3rd party software provider
 - What is changing & when; The cutover Plan (what does an abattoir need to do); How to register & login; Contact support details (email and phone)
- Webinar recording to be shared with abattoirs
- LI Website being updated
 - Links added to LIS registration
 - FAQ's for different user groups

Web User Interface Quick Demo